



# Buckinghamshire County Council

## Select Committee

Health and Adult Social Care

**Date:** Tuesday 26 May 2015  
**Time:** 10.00 am  
**Venue:** Mezzanine Room 2, County Hall, Aylesbury

### AGENDA

#### 9.30 am Pre-meeting Discussion

This session is for members of the Committee only. It is to allow the members time to discuss lines of questioning, areas for discussion and what needs to be achieved during the meeting.

#### 10.00 am Formal Meeting Begins

Agenda Item	Time	Page No
1 ELECTION OF CHAIRMAN	10:00	
2 APPOINTMENT OF VICE CHAIRMAN	10:05	
3 ANNUAL COMMITTEE APPROVAL OF VOTING RIGHTS		
The Committee must agree annually the voting rights of District Members of the Committee.		
4 APOLOGIES FOR ABSENCE / CHANGES IN MEMBERSHIP		
5 DECLARATIONS OF INTEREST		
To disclose any Personal or Disclosable Pecuniary Interests		
6 MINUTES		5 - 10
To confirm the minutes of the meeting held on the 28 <sup>th</sup> April 2015 as a correct record.		
7 PUBLIC QUESTIONS		
This is an opportunity for members of the public to put a		



CHILTERN  
District Council



South Bucks  
District Council



question or raise an issue of concern, related to health. Where possible, the relevant organisation to which the question/issue is directed will be present to give a verbal response. The member of public will be invited to speak for up to four minutes on their issue. A maximum of 30 minutes is set aside for the Public Questions slot in total (including responses and any Committee discussion). This may be extended with the Chairman's discretion.

For full guidance on Public Questions, including how to register a request to speak during this slot, please follow this link:

<http://www.buckscc.gov.uk/about-your-council/scrutiny/getting-involved/>

The Chairman has received one public question.

The question is as follows:

***“What plans does Bucks NHS have for the Marlow Cottage Hospital, in reports that management are looking to either close down the hospital or scale down the facilities”?***

**8 CHAIRMAN'S UPDATE**

**10:15**

**9 COMMITTEE UPDATE**

An opportunity to update the Committee on relevant information and report on any meetings of external organisations attended since the last meeting of the Committee. This is particularly pertinent to members who act in a liaison capacity with NHS Boards and for District Representatives.

**10 ADULT MENTAL HEALTH SERVICES**

**10:20**

**11 - 30**

For Members to receive overview information from the service providers on the range of Adult Mental Health services across the County. This will include services available, data, key priorities and plans for the future. This item will provide members with the information they require to highlight future areas of focus.

**Attendees: Yvonne Taylor, Chief Operating Officer, Oxford Health**

**Rob Bale, Clinical Director, Oxford Health**

**Jo Breen, Service Manager Older People, Oxford Health**

---

Visit [democracy.buckscc.gov.uk](http://democracy.buckscc.gov.uk) for councillor information and email alerts for meetings, and decisions affecting your local area. Catch up with latest County Council democracy news on twitter @BucksDemocracy



- |           |   |              |                |
|-----------|---|--------------|----------------|
| <b>11</b> | <b>CHILDREN AND ADOLESCENT MENTAL SERVICES (CAMHS) RE- TENDER</b>   | <b>11:20</b> | <b>31 - 38</b> |
|           | For Members to be provided with a status update from the new provider and service changes planned.  |              |                |
|           | <b>Attendees: Pauline Scully, Service Director and Michelle Kukielka, Barnardos.</b>  |              |                |
| <b>12</b> | <b>COMMUNITIES, HEALTH AND ADULT SOCIAL CARE BUSINESS UNIT PLAN</b>   | <b>11:45</b> |                |
|           | For members to review the Business Unit plan for the Communities, Health and Adult Social Care Business Unit. They will consider the key priorities and challenges for the year ahead and have an opportunity to highlight possible areas of focus for the Committee. |              |                |
|           | Business Unit Plan can be found online at:<br><a href="https://democracy.buckscc.gov.uk/documents/s56765/Agreed%20ACH%20CHASC%20Business%20Unit%20Plan.pdf">https://democracy.buckscc.gov.uk/documents/s56765/Agreed%20ACH%20CHASC%20Business%20Unit%20Plan.pdf</a>   |              |                |
|           | <b>Attendees: Trevor Boyd, Managing Director.</b>   |              |                |
| <b>13</b> | <b>COMMITTEE WORK PROGRAMME</b>   | <b>12:15</b> | <b>39 - 40</b> |
|           | For Members to consider the committee work programme and agree future committee items.  |              |                |
| <b>14</b> | <b>DATE AND TIME OF NEXT MEETING</b>  | <b>12:25</b> |                |
|           | The next committee meeting will be held on 30 <sup>th</sup> June at 10:00 in the Mezzanine Room 2.  |              |                |

### **Purpose of the committee**

The Health and Adult Social Care Select Committee is the designated statutory health scrutiny committee and shall carry out the local authority scrutiny functions for all policies and services relating to the scrutiny of public health, local health services, adult social services and family wellbeing, including: Public health and wellbeing; NHS services; Health and social care commissioning; GPs and medical centres; Dental Practices; Health and social care performance; Private health services; Family wellbeing; Adult social services; Older people; Safeguarding; Physical and sensory services; and Learning disabilities.

### **Webcasting notice**

Please note: this meeting may be filmed for subsequent broadcast via the Council's internet site - at the start of the meeting the Chairman will confirm if all or part of the meeting is being filmed.

---

Visit [democracy.buckscc.gov.uk](https://democracy.buckscc.gov.uk) for councillor information and email alerts for meetings, and decisions affecting your local area. Catch up with latest County Council democracy news on twitter @BucksDemocracy



You should be aware that the Council is a Data Controller under the Data Protection Act. Data collected during this webcast will be retained in accordance with the Council's published policy.

Therefore by entering the meeting room, you are consenting to being filmed and to the possible use of those images and sound recordings for webcasting and/or training purposes. If members of the public do not wish to have their image captured they should sit within the marked area and highlight this to an Officer.

If you have any queries regarding this, please contact Member Services on 01296 382876.

---

If you would like to attend a meeting, but need extra help to do so, for example because of a disability, please contact us as early as possible, so that we can try to put the right support in place.

*For further information please contact: Kama Wager on 01296 382615 , email: [kwager@buckscc.gov.uk](mailto:kwager@buckscc.gov.uk)*

### **Members**

Ms A Macpherson	Ms J Teesdale
Mr R Reed	Mr D Carroll
Mr B Adams	Mr N Brown
Mrs M Aston	Ms J Blake
Mr B Roberts	Mr D Hayday
Mrs A Davies	

### **Co-opted Members**

Mrs Freda Roberts, Aylesbury Vale District Council  
Mr N Shepherd, Chiltern District Council  
Dr W Matthews, South Bucks District Council  
Mr A Green, Wycombe District Council  
Ms S Adoh, Local HealthWatch

---

Visit [democracy.buckscc.gov.uk](http://democracy.buckscc.gov.uk) for councillor information and email alerts for meetings, and decisions affecting your local area. Catch up with latest County Council democracy news on twitter @BucksDemocracy





**Buckinghamshire County Council**  
**Select Committee**  
 Health and Adult Social Care

**Minutes**

*HEALTH AND ADULT SOCIAL CARE  
 SELECT COMMITTEE*

Minutes from the meeting held on Tuesday 28 April 2015, in Mezzanine Room 2, County Hall, Aylesbury, commencing at Time Not Specified and concluding at Time Not Specified.

This meeting was webcast. To review the detailed discussions that took place, please see the webcast which can be found at <http://www.buckscc.public-i.tv/>  
 The webcasts are retained on this website for 6 months. Recordings of any previous meetings beyond this can be requested (contact: [admin@buckscc.gov.uk](mailto:admin@buckscc.gov.uk))

**MEMBERS PRESENT**

**Buckinghamshire County Council**

Ms A Macpherson (In the Chair)  
 Mr B Adams, Mrs A Davies, Mr N Brown, Ms J Blake and Mr D Hayday

**District Councils**

Mr N Shepherd	Chiltern District Council
Dr W Matthews	South Bucks District Council
Mr A Green	Wycombe District Council

**Others in Attendance**

Ms K Wager, Committee Adviser  
 Mr G Finch, Contracts Manager  
 Mr N Dardis, Chief Operating Officer, Buckinghamshire Healthcare Trust  
 Mrs S Yapp, Service Director (Commissioning and Service Improvement), BCC  
 Mr M Farrow, Managing Director, Buckinghamshire Care Limited  
 Ms C Morrice, Chief Nurse and Director of Patient Care Standards, Buckinghamshire Healthcare NHS Trust  
 Dr T Kenny, Medical Director, Buckinghamshire Healthcare NHS Trust

**1 APOLOGIES FOR ABSENCE / CHANGES IN MEMBERSHIP**



**South Bucks**  
 District Council



Apologies received from Ms S Adoh, Mr D Carroll, Mr R Reed, Mr B Roberts, Ms J Teesdale.

Membership changes: Following full council, changes are that; Mr A Huxley is no longer a member of the committee. Brian Adams will remain as the 1 UKIP representative (reduction from 2 to 1 member).

Mr D Hayday joins the committee as Independent Representative.

## **2 DECLARATIONS OF INTEREST**

There were no declarations of interest.

## **3 MINUTES**

The minutes of the meeting held on Tuesday 24<sup>th</sup> March 2015 were confirmed as a correct record subject to the following amendment:

Add to attendees - Dr Malcolm Jones.

There are two outstanding actions to be followed up and reported back at the next meeting. These are:

- 1) **Action for the Chairman** to feedback to the committee when a response is received from NHS Blood and Transplant – this is in relation to issues raised at committee meeting on 24<sup>th</sup> March (see minutes of the meeting). The action has been chased and awaiting response.
- 2) **Action for CCG's** to provide a summary of the £30m of extra funding provided and their plans for this (see minutes of meeting on 24<sup>th</sup> March for detail). This action has been chased and a response is expected imminently.

## **4 PUBLIC QUESTIONS**

The following public questions were received:

1. Question received from a member of the public:

“Buckinghamshire Care is a new company that has recently restructured and brought in another tier of management at a time when other organisations are de-layering to focus on the support for front line staff

**How will this third additional tier of management improve communication and support to front line staff who are at the same time having to sign new contracts that give them less flexible working conditions”.**

This question was dealt with under item 8 on Buckinghamshire Care. SEE MINUTES FOR THIS ITEM AND WEBCAST FOR DETAIL.

2. Question received from member of the public:

“What guarantees can be given that the services we currently have including the Cardiac/Stroke and Maternity unit will still be on Queen Alexandra Road in 5-10 years time? What are the future plans for the Wycombe Hospital site?”

This question was dealt with under item 9 on Buckinghamshire Healthcare Trust. See minutes for this item and webcast for detail.

## **5 CHAIRMAN'S UPDATE**

The Chairman advised that Freda Roberts will not be standing in the District Elections this time round. The Chairman thanked Ms Freda Roberts for all of her, support and dedication to

the work of the committee over the years.

The Chairman informed the committee that she and Mr R Reed will be visiting the Whiteleaf Centre on Thursday 30<sup>th</sup> April and will report back to the committee at the next meeting.

The Chairman gave an update on the Public Health launch of Active Bucks and the role of councillors in promoting active communities.

## **6 COMMITTEE UPDATE**

Mr B Adams informed the committee that he has had recent feedback from his local patient participation group.

Ms W Matthews, informed the committee that in working with the LAFs her local area has set up two Movers and Shakers clubs for elderly residents in the local area.

## **7 LOCAL AREA TRADING COMPANY ( LATC) PART 1 COMMISSIONERS**

Mr Graeme Finch, Contract Manager provided an overview of the LATC, highlighting the key points raised within the information paper – SEE PAPER/WEBCAST FOR CONTENT.

The following issues were raised by the committee: Governance structures and the role/terms of reference of the Shareholder Commissioning Group (SCG) as an advisory body and its membership, the roles and remit of the board of directors, the governance around dividends, the level of influence of SCG, the advantages and implications of Teckal Status and value for money and efficiencies of the delivery model as well as lessons learnt in the first 18 months since setting up the LATC (in particular around culture change).

Other matters raised concerned the performance and slowness of sales of services to other local authority areas as originally planned in the business case. It was highlighted that this was due to other local authority areas also adopting LATC delivery models. It is also relatively speaking in its infancy and opportunities to sell services have not yet arisen.

See Webcast for full details of the discussion.

**ACTION:** To have a follow up item on LATC on the work programme committee for 6-12 months' time.

## **8 LOCAL AREA TRADING COMPANY ( LATC), PART TWO: BUCKINGHAMSHIRE CARE, THE PROVIDERS**

Mr Martin Farrow, Managing Director provided an overview of the key points within his information paper: SEE PAPER AND WEBCAST FOR DETAIL.

The following issues were raised by the committee: the challenges and opportunities faced by the service provider, challenges around recruitment and retention in getting the right people in to social work, the overall aims, objectives of the service provider and how performance against them is measured, the visibility and transparency of service objectives and performance particularly in relation to service user experience of services, options for other services to include/deliver going forward to ensure person centred approach to care and prevention agenda, the services delivered within the community, where they are, how they are promoted and access to them.

In relation to where services are delivered, it was raised that Wycombe has a lack of coverage of day care opportunities provision. It was discussed that plans are in process to identify suitable locations for a site in Wycombe.

**ACTION: Susie Yapp** to update on the timeframes for site opportunities for Wycombe.

Other matters arising were around staffing and recruitment and whether or not this has had any negative impact on service delivery to date.

The public question raised in relation to Buckinghamshire Care as highlighted in item 4 was raised here. The Chairman asked the question in the absence of the member of public. The response can be found on the webcast at approx. 11:06 am answered by Martin Farrow.

Martin Farrow also highlighted a review with the **Tizzard Group** is taking place which is looking specifically at the services in relation to adults with Learning Difficulties.

**ACTION: Martin Farrow** to share outcomes of this review with the committee at appropriate time.

## **9 BUCKINGHAMSHIRE HEALTHCARE TRUST (BHT)**

Neil Dardis presented an overview of the presentation slides and detailed information provided to members in their agenda packs: SEE PAPERS AND WEBCAST FOR DETAIL.

The following issues were raised by the committee: improvements to end of life care and mortality reviews, improvements being made to drive long term planning of recruitment, training and retention of staff, drives towards integrated records across the NHS and electronic discharge papers, BRAVO and ensuring that triage process improvements lead to patient being seen by the right person first time, improvements being made to ensure seamless integration from patient perspective. Matters around health representation at the Multi Agency Safeguarding Hub were also discussed.

Other matters arising included questions around services delivered in Wycombe, (Xray services and impact on number of people attending Stoke Mandeville) and long term plans for Wycombe, the public question highlighted in item 4 was asked here and responded to by both BHT and the CCG, and expanded upon by Wycombe members. National reports were referred to around guidelines for what clinical specialities are required to be co-located.

See webcast for response to public question.

The Chairman reminded the committee many areas regarding Wycombe hospital have already been covered in full at previous meeting and the committee are awaiting Wycombe District Council's report. National guidance reports referred to would be circulated to members again for information.

**Action: Kama Wager to ask Louise Patten** for national reports referred to and circulates to members.

The Chairman asked for an update on the investigations into the recent incident where a dementia patient died after walking out of Stoke Mandeville. The committee were informed that system wide briefing took place to ensure immediate mitigation measures were taken, a full investigation is taking place and lessons learnt are being acted upon.

**ACTION: Carolyn Morrice**, Chief Nurse, to provide a brief written status update on outcome of the investigation.

The Chairman highlighted committee's recommendations on the Keogh report have now been covered by many of the quality improvement programmes taking place within BHT. However the Chairman requested a brief final written response in order to close down the recommendations and update the website with the final response.



**ACTION: BHT** to provide a brief final written response to each of the recommendations addressing how they have been implemented or superseded by other improvement works taking place.

#### **10 COMMITTEE WORK: 15 MIN DOMICILIARY CARE VISITS INQUIRY SCOPE**

The committee considered the scope for an inquiry into 15 Min domiciliary care visits. Members agreed the scope with the addition of Mr B Adams and Mr N Brown to the inquiry group membership.

**Action:** For Committee Advisor to develop the evidence schedule for the inquiry and set evidence sessions.

#### **11 COMMITTEE WORK PROGRAMME**

The Chairman highlighted that the committee would prioritise the 15 min visit inquiry until the summer. The committee will then focus on the LD inquiry which will commence evidence gathering in September. The committee agreed.

The Chairman signposted members to the work programme and highlighted forthcoming items. SEE PAPERS FOR DETAIL.

The committee discussed areas to be considered in the development of the work programme. These included:

- Better Care Fund
- End of Life Care update ( early 2016)
- Healthwatch and work on configuration of community services.
- Day care centres

#### **12 DATE AND TIME OF NEXT MEETING**

The date of the next meeting is the 26<sup>th</sup> May 2015.

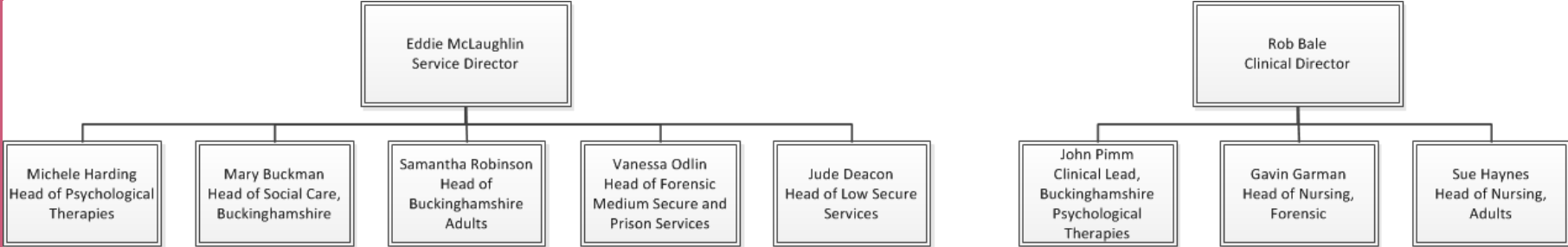
**CHAIRMAN**



# The Adult Directorate

Dr Rob Bale, Clinical Director

# Meet the Senior Team



# Overview of the Directorate

- 1 in 4 people suffer from a mental health problem.
- Directorate treats adults with a range of conditions from mild to moderate anxiety and depression to managing people with a severe and enduring mental illness.
- We also provide prison mental health and specialist care to people who have come into our services through the criminal justice system.
- We have a total budget of £22m for mental health provision in Buckinghamshire.
- Currently have approximately 4000 people open on our caseload across all our countywide services.

# Adult Services

- 2 Adult Mental Health Teams (located in Aylesbury and High Wycombe with a satellite base in Amersham).
- Inpatient services are provided on our purpose built health and wellbeing campus in Aylesbury. 2 Adult Acute Inpatient Units (1 x 20 bedded female and 1 x 20 bedded male unit) and 1 Rehabilitation Ward (1 x 20 bedded mixed unit).
- Specialist services for patients with personality disorders, early onset psychosis or who need talking therapies to support their recovery.
- Team based at Stoke Mandeville Hospital to provide an in-reach service to patients presenting at A&E following an episode of deliberate self-harm.

# Adult Services continued

- Services are jointly commissioned with Buckinghamshire County Council so the AMHTs are all fully integrated teams.
- We work to a locality model using outcomes based commissioning as our measurements of success.
- We work in close partnership with Buckinghamshire Healthcare Trust, 3<sup>rd</sup> Sector, GPs, Ambulance Services and Thames Valley Police.

# Forensic Services

- 2 Forensic Community Mental Health Teams (located in Milton Keynes covering Milton Keynes and Buckinghamshire).
- 2 Forensic Medium Secure Inpatient Units (1 x 8 bedded unit and 1 x 20 bedded unit located in Milton Keynes).
- 1 Forensic Low Secure Inpatient Unit (1 x 20 bedded unit located in Aylesbury).
- Prison In-reach services are provided to HMP Grendon, HMP Springhill and Aylesbury YOI.



# Forensic Services continued

- Specialist commissioners fund all forensic and mental health services.
- Joint working is undertaken with the Ministry of Justice and the Probation Service across both inpatient and community services.
- Oxford Health NHS FT is also the provider of secure services for Oxfordshire and Berkshire.

# What Do We Want To Achieve

- Quality evidenced based care for patients and their carers.
- Easier access into all our services for patients.
- Transparent patient pathway with clearly defined treatments and outcomes.
- Integrated partnership working with all internal and external key stakeholders.
- Continued development of services that will improve the patient experience, eg: Street Triage Service

# Older Adult Mental Health in Buckinghamshire

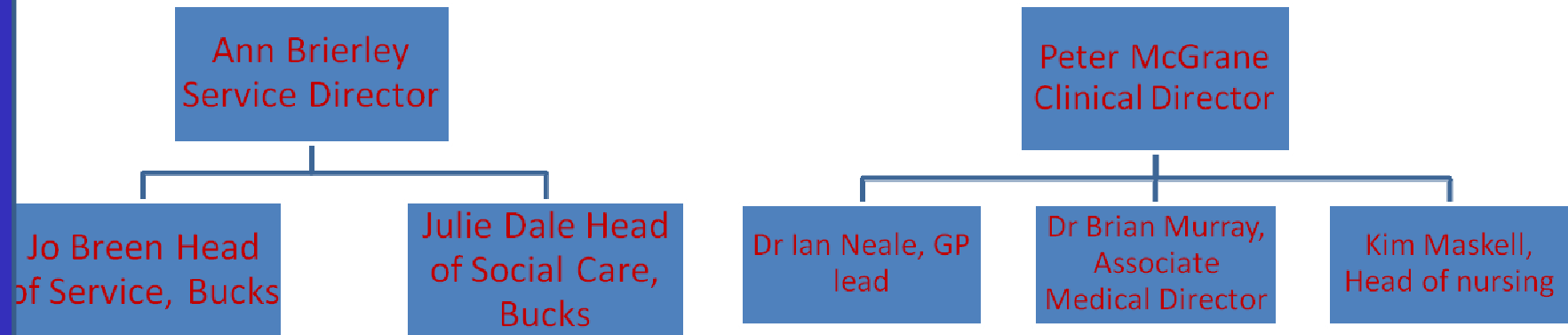
Jo Breen

*Head of Service*

Dr Brian Murray

*Consultant Older Adult Psychiatrist, Aylesbury  
Associate Medical Director*

# Senior Team, Older Adult Directorate



# Overview

- Approximately 50% of our work is with dementia, 50 % 'other' mental illness
- Co-morbidity is common
- Total budget of £5.3 m for older adult mental health in Buckinghamshire.
- Approximately 2000 people open on our caseload across our countywide services
- Approximately 2000 patient contacts a month

# CMHTs - location

- North Buckinghamshire
  - Aylesbury, Whiteleaf Centre
  - Covers 35,388 people > 65 yrs
- South Buckinghamshire
  - Amersham, Haleacre
  - High Wycombe, Shrublands
  - Covers 60,776 people >65 yrs

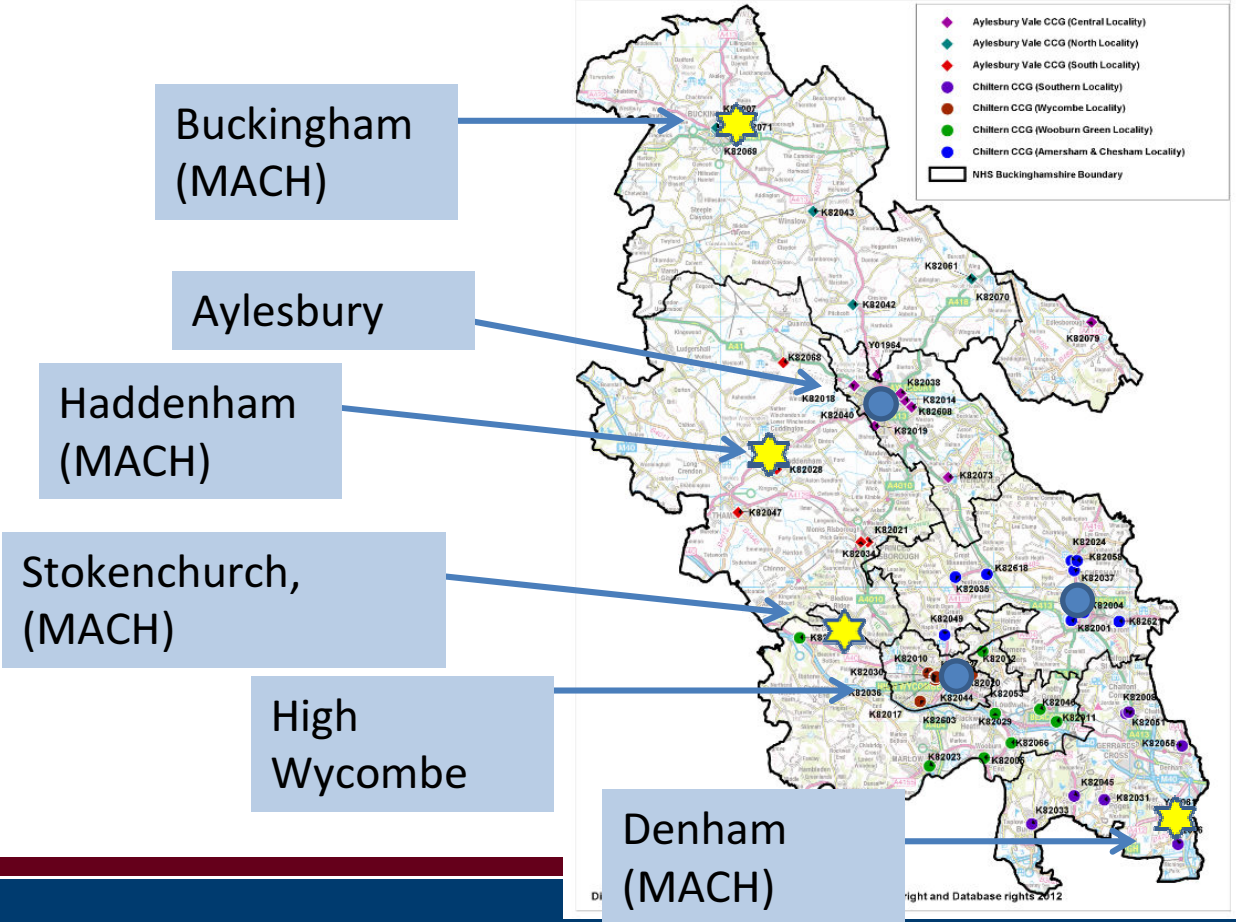
# Dementia diagnosis pathway

- Memory clinics
  - Aylesbury (3 clinics / week)
  - Amersham (3 clinics / week)
  - High Wycombe (2 clinics / week)
- MACH clinics
  - Funded by Dementia Challenge, CCG
  - Haddenham
  - Buckingham
  - Stokenchurch
  - Denham

# Memory clinics

24

Map of GP Practices and Localities within NHS Buckinghamshire (April 2012)





# In - patients

- Older Adults have one ward in Aylesbury, Whiteleaf
  - 20 beds
  - Mixed diagnosis
  - Mixed sex (male + female corridors)
  - Emphasis is on keeping patients at home

# Integration

- 1 x CPN seconded to Quality in Care Home team
- 1.5 x CPN supporting dementia diagnosis in care homes
- CMHTs support MAGS (multiagency groups)
- High Wycombe CMHT supports MuDAS

# Future

- AIMS accreditation for our ward
- MSNAP accreditation for our memory clinic services
- To use integration with key partners to provide better overall care for older adults in Buckinghamshire



## Oxfordshire Health NHS Provided Services in Buckinghamshire

Service	Location
<b>Children &amp; Young People's Directorate</b>	
North Bucks CAMHs (Tier 2 & 3)	Sue Nicholls Centre Manor House Bierton Road AYLESBURY HP20 1EG
South Bucks CAMHSs & PCAMHs (Tier 2 & 3)	Orchard House Cressex Link HIGH WYCOMBE HP12 4BF
Bucks OSCA and Crisis (Tier 4)	
Re-Connect 0.2	
Speech & Language (Bucks)	Oakridge Health Centre 240 Desborough Road HIGH WYCOMBE HP11 2QR
<b>Adult Directorate</b>	
Ruby Ward (Adult Female Ward)	Whiteleaf Centre Bierton Road AYLESBURY HP20 1EG
Opal Ward (Adult Rehabilitation Ward)	
Sapphire Ward (Adult Male Ward)	
Aylesbury Adult Mental Health Team	
Chiltern Adult Mental Health Team	Haleacre Unit Amersham Hospital AMERSHAM HP7 0JD
Woodlands (Low Secure Adult Ward)	Bierton Road AYLESBURY HP20 1EG
Complex Needs (Specialist Community Service)	Wing Building Bierton Road AYLESBURY HP20 1EG
Healthy Minds (Improving access to Psychological Therapies Service)	Buckinghamshire Primary Care Wellbeing Service Prospect House Crendon Street HIGH WYCOMBE HP13 6LA

PIRLS (Psychiatric in-Reach Liaison Service)	John Hampden House Stoke Mandeville Hospital Mandeville Road AYLESBURY HP21 8AL
Early Intervention in Psychosis Community Service	Whiteleaf Centre Bierton Road AYLESBURY HP20 1EG
<b>Older People's Directorate</b>	
Amber Ward (Older People's Ward)	Whiteleaf Centre Bierton Road AYLESBURY HP20 1EG
North Bucks CMHT	Whiteleaf Centre Bierton Road AYLESBURY HP20 1EG and Satellite Base Buckingham Community Hospital High Street Buckingham MK18 1NU
South Bucks CMHT	Haleacre Unit Amersham Hospital AMERSHAM HP7 0JD and Queens Road HIGH WYCOMBE HP13 6PT
MACH Memory Clinics	Verney Close Surgery, Buckingham, Haddenham GP Surgery, Stokenchurch GP Surgery, Denham GP Surgery (NB Clinics in these surgeries are not exclusive to these surgeries, space is rented.)
Embleton Day Unit	Buckingham Community Hospital High Street Buckingham MK18 1NU

# Buckinghamshire CAMHS

Pauline Scully  
Michelle Kukielka

Oxford Health   
NHS Foundation Trust

Believe in  
children  
 Barnardo's  
South East & Anglia

  
beating eating disorders

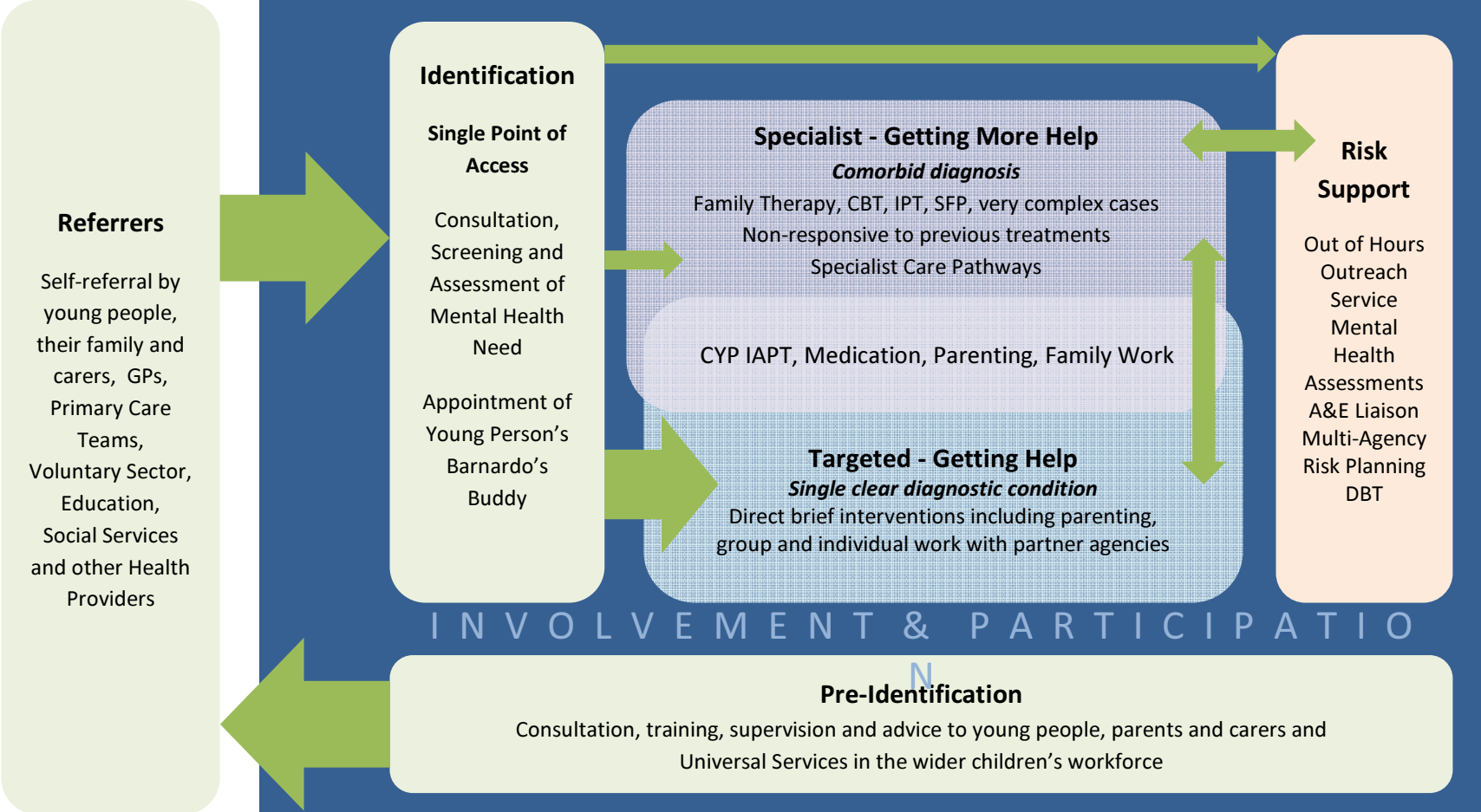
A brief overview of key aspects of our approach  
Key elements of service delivery

# Our Approach:

- Child and Young Person-Centred
- Accessible
- Holistic
- Tailored
- Involving
- Supporting
- Outcomes-focussed

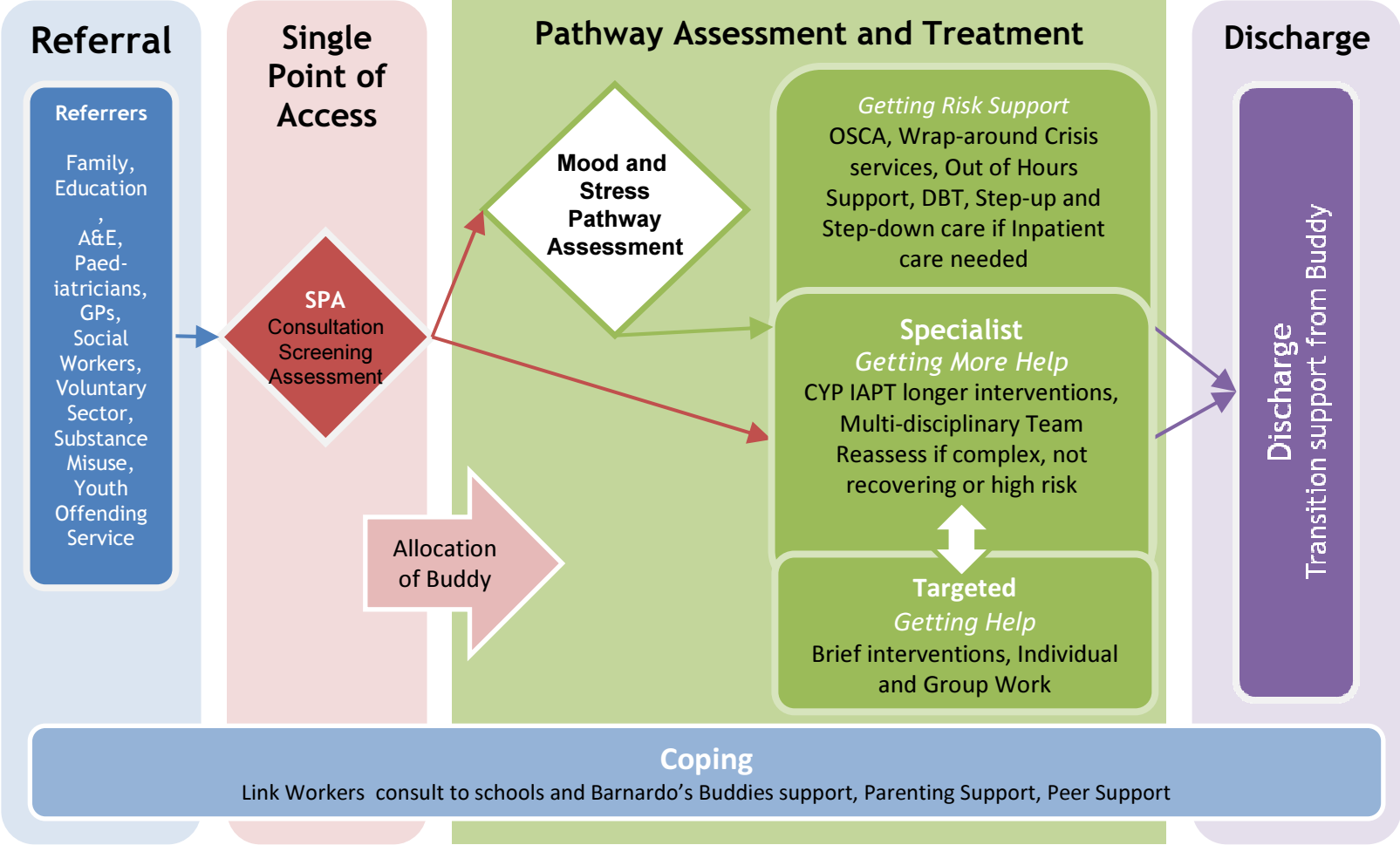


# Our Service Model



33

# Care Pathway for Mood and Stress



# The Barnardo's Buddy :

- Matched
- Engagement
- Appointments
- Targeted Interventions
- More help

# Vulnerable Children and Young People

A young person's  
experience  
in the new  
model

- A seamless service

# Buckinghamshire CAMHS

## Thank you

A brief overview of key aspects of our approach

Key elements of service delivery



## Health & Adult Social Care Select Committee

Date	Topic	Description and purpose	Contact Officer	Attendees
26 May 2015	Adult Mental Health Services	Overview item - for Members to review local Adult Mental Health data and service provision	Kama Wager, Committee Adviser	Oxford Health NHS Foundation Trust / CCGs
26 May 2015	Children and Adolescent Mental Health Services (CAMHS) re-tender	Overview item - for Members to scrutinise the new CAMHS provider and review service changes planned	Kama Wager, Committee Adviser	BCC/CCG Co-Commissioners, new CAMHS provider (TBC) representatives
30 Jun 2015	(TBC) Care Act	For Members to receive an update on the implications of the Care Act which came into force in April 2015.	Susie Yapp, Service Director (Commissioning and Service Improvement)	
30 Jun 2015	Public Health (TBC)	For members to scrutinise public health; the key priorities and challenges and how the budget is allocated and spent. Members will also examine progress towards mainstreaming public health across other council services, building upon the integration update members received in 2014.	Kama Wager, Committee Adviser	Patricia Birchley, Cabinet Member for Health and Adult Social Care. oJane O'Grady, Consultant Director of Public Health.

15 Sep 2015	Adults Learning Disability Services Inquiry	Inquiry Evidence: For members to receive evidence on the services available for adults with learning disabilities. The overview information will include; data on services and number of service users, budget allocation and the integration agenda. This information will provide members with the background evidence for their inquiry.	Zita Calkin, Lead Commissioner for Learning Disabilities	Adam Payne, Service Manager
15 Sep 2015	Committee Work Programme	For the Committee to note its updated work programme	Kama Wager, Committee Adviser	Kama Wager, Committee Advisor
15 Sep 2015	Frimley Health Trust Update	Overview Information: For members to receive an update on the progress towards quality improvements, future plans for trust sites, services and impacts on residents.	Kama Wager, Committee Adviser	Andrew Morris, Chief Executive of Frimley Health Trust
20 Oct 2015	(TBC) Day Care Opportunities	For members to review day care opportunities across the County.	Susie Yapp, Service Director (Commissioning and Service Improvement), Kama Wager, Committee Adviser	Kelly Taylor, Project Manager
20 Oct 2015	Committee Work Programme	For the Committee to note its updated work programme	Kama Wager, Committee Adviser	Kama Wager, Committee Advisor
24 Nov 2015	HASC GP Services Inquiry 12 month review		Kama Wager, Committee Adviser	